

Ship-to Location Change Utility

Version 6.9.0

By Musick International, Inc.



Overview

The Ship-to Location Change Utility provides the ability to change Accounts Receivable Ship-to Location codes.

Compatibility

Compatible with Sage 300 2022, 2021, 2020, 2019, 2018, 2017, 2016, 2014, 2012, v6.0.

Installation

Download and install the latest release of either FixIT or DataCHECK. In the folder where FixIT or DataCHECK is installed (default is C:\FixITcc), run the install program “ShipToLocationChangeInstall.exe”. We recommend using “Run as Administrator”.

Connect FixIT or DataCHECK

The Ship-to Location Change requires the database connection to be created in FixIT or DataCHECK. Start FixIT or DataCHECK and verify the connection to the company. If the company is not listed on the “Validate” screen, select the “Locate” icon on the left toolbar. Change to “Locate Data using FixIT Path” as the default. Click “New” to add a new connection to the company database. “Apply” the changes and verify the database is available.

Running Ship-to Location Change


Before running the Ship-to Location Change, verify the company database is available in FixIT or DataCHECK. Launch the ShipToLocationChange.exe from “Start” – “Programs” – “Musick International, Inc” – “Ship-to Location Change”.

Ship-to Location Change v6.9.0 2022-01-21

Select a Company
[SAMLTD] Sage 2022 Sample Company Limited - 69A

Ship-to Location Name	Customer	Location Code	New Code
Receiving Dock A	1210	A	DOCKA
Alhambra Business Complex Cons	1400	ALHAMB	
Avonlea Mall Construction Site	1400	AVONLE	
Receiving Dock B	1210	B	DOCKB
Chapter One Bookstore Site	1550	BOOK	
Receiving Dock C	1210	C	DOCKC
Computer City Site	1550	COMP	
East Oakland Warehouse	1105	EAST	
Break Away - East Warehouse	1580	EAST	
First National Bank Constructi	1400	FIRST	
Home office	1200	HOME	
Home Office	1520	HOME	
Home Office 2	1520	HOME2	
Mid-way warehouse	1500	MID	
Postal Outlet	1240	POSTAL	
Warehouse	1200	WAREHS	
West Oakland Warehouse	1105	WEST	
Break Away - West Warehouse	1580	WEST	
Yamate Warehouse	1500	YAM	

Change Ship-to Locations




Sage 300

Enter the “New Code” for each Customer and Location. Location codes may contain uppercase letters and numbers. Symbols and spaces are not allowed. Once the New Codes are entered, click the “Change Ship-to Locations” button to process the changes.

At this point a prompt is displayed to verify a backup has been made:

Backup Required

 This program will make changes in your database. These changes cannot be undone. You must have a valid backup before continuing.

Note: Please run the A/R Data Integrity check and verify the customer data before doing any processing. If you receive any error messages or the Ship-to Location Change does not complete, do NOT use this database. Please restore from a backup.

If you have any problems, please contact Musick International, Inc. at Support@Musick-Int.com or 719-395-4124

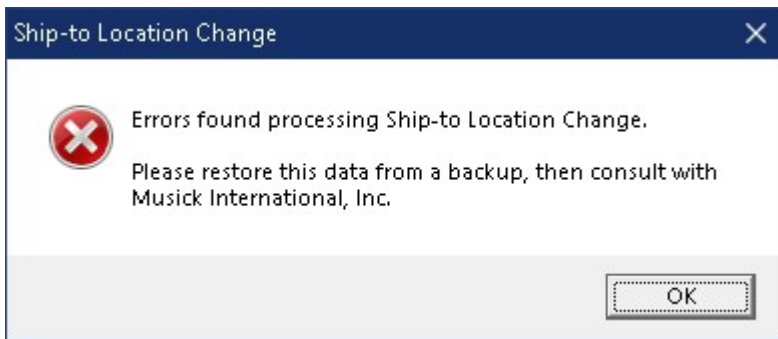
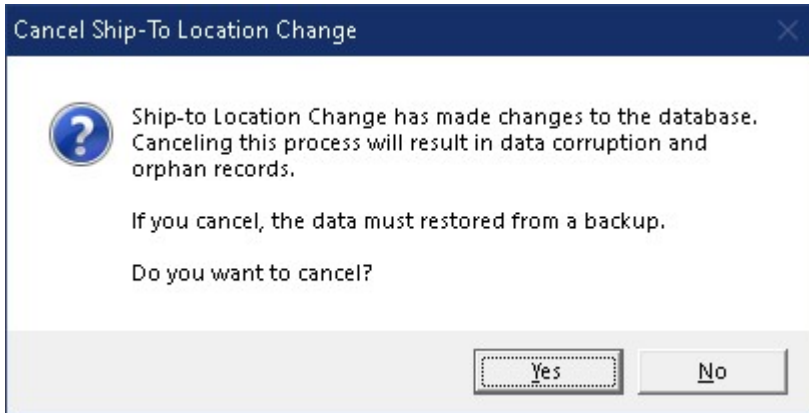
Do you have a current backup of the database?

Yes No

The “Ship-to Location Change” will spin through the database and make all the required changes. Once the process has completed, the following message will display:

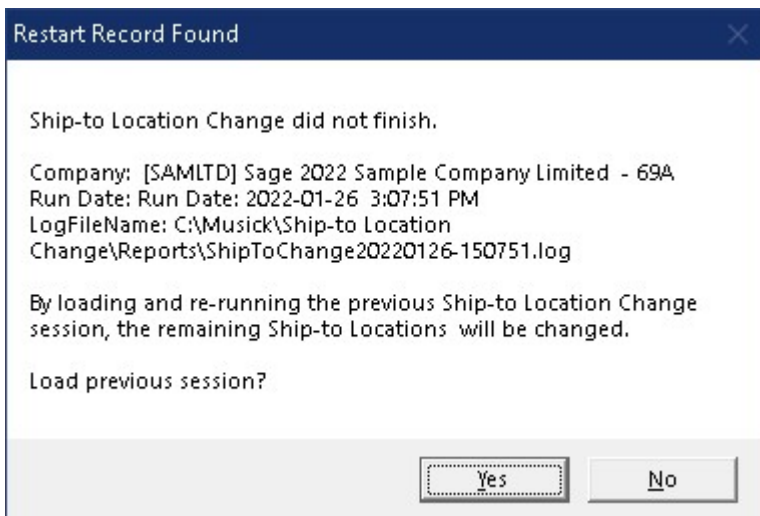
Canceling the Process

If you cancel the process, this screen will display:



Restart Found

When the Ship-to Location Change is canceled or interrupted, the following message will display:



It is recommended to select "Yes" to reload the previous session and complete the process. As long as no changes have been made to the database, re-running the restart information will complete the Ship-to Location Change previously in progress. Selecting "No" should only be considered if the database was restored from a backup. Otherwise, some tables in the sage 300 database have the new ship-to location codes and other tables have the original codes.



Thank You for selecting Musick International, Inc.

Support@Musick-Int.com
719-395-4124
www.Musick-Int.com

Copyright 2022 Musick International, Inc.
FixIT™ is a registered trademark of Musick International, Inc.